

Center for Research and Training in the Sciences (UTSA),  
Institute for Integration of Medicine & Science (UTHSA),  
Translational Science Graduate Program, &  
UTSA-UTHSA Joint Graduate Program in Biomedical Engineering  
invite you to attend

# STRECH

Seminars in Translational Research

Presents

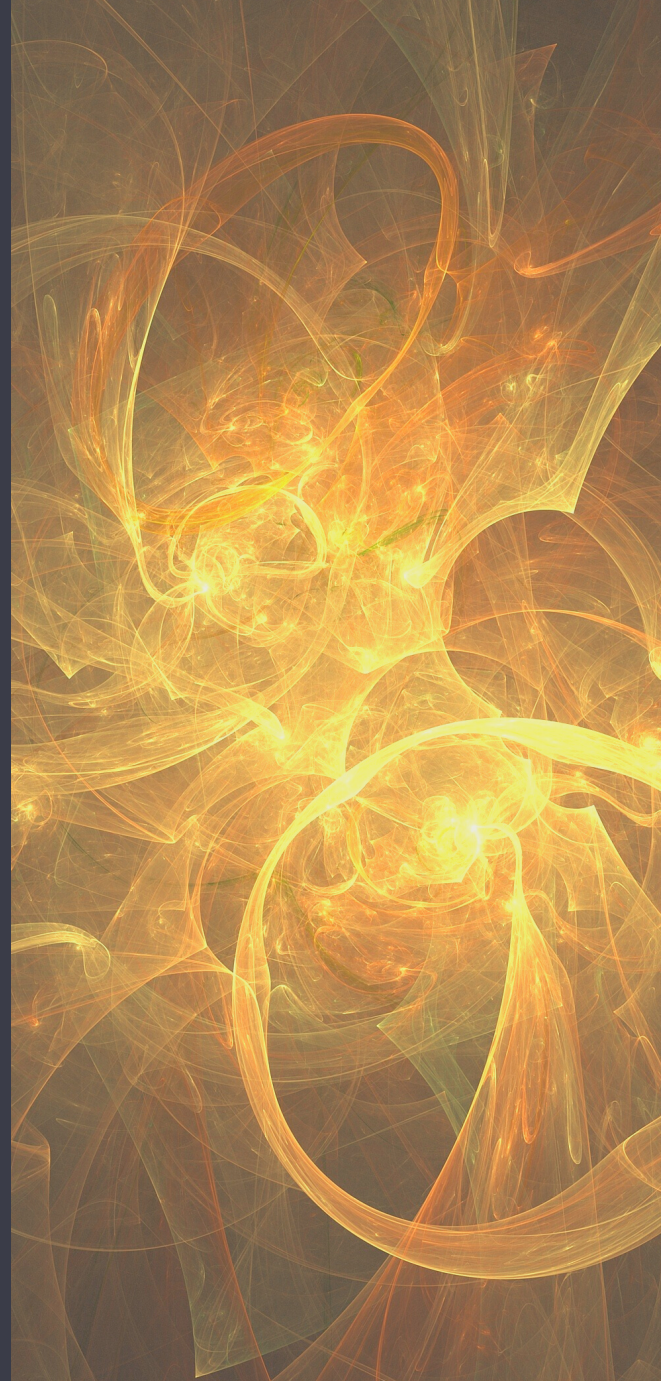
*"Developing a product for clinical use is not only about the cool science"*

Research to develop products intended for clinical use is exciting and challenging, but it is only the beginning. Clinical product development and use requires quality systems, coordinated management, regulatory knowledge, trained personnel, cost of goods, raw materials sourcing, manufacturing, testing, stability, packaging, logistics and storage. These elements for optimizing commercialization to use should be integrated into scientists' training and thinking from the beginning—not considered as secondary elements. Intellectual property, funding, contracting, collaborations and partnering are on-going considerations.



## MARY PAT MOYER, PH.D.

Founder, President, CEO, and Chief Science Officer, INCELL Corporation LLC  
Professor of Surgery, UT Health San Antonio  
NAE, National Academy of Engineering Member; Bioengineering  
CTBS: Certified Tissue Banking Specialist  
President and Director, Foundation of Cell, Gene and Tissue Innovations



Friday, March 19, 2021  
9:00AM - 10:00AM

For information on participating in this virtual seminar, please head to <https://www.utsa.edu/crts/strech/> or scan the QR code below.



✉ STRECH@UTHSCSA.edu  
☎ (210) 562-IIMS

