

Adel Alaeddini, Director

CONTACT: Adel.Alaeddini@utsa.edu

Visit us at <http://camls.utsa.edu/>



VISION/MISSION

Vision: To be the top research, service, and training provider in the area of advanced manufacturing in San Antonio and nearby cities

Mission Create a collaborative platform with unique expertise in advanced manufacturing for basic and applied research with impactful outcomes applicable to a wide range of manufacturing and service industries.

MAJOR RESEARCH AREAS

- Lean and Six Sigma
- Manufacturing Systems
- Medical Devices Design
- Supply Chain Optimization
- Machine Learning and Data Analytics
- Additive Manufacturing
- Corrosion

EXTERNAL FUNDING SOURCES

- National Science Foundation
- National Institutes of Health
- Department of Defense
- Sandia National Laboratories
- Local Industry

CAMLS Operation Model

Research

- Federal Funding**
- Industry Funding**

Center consortium model & Consulting service

Knowledge Hub

- Rapid prototyping and supporting services**
- Design, manufacturing, test, analysis

Training

- Onsite Training Short Courses**
- Onsite Project Assistance**
- C.I. Professionals Seminars**

Members

Dr. Alaeddini, Director
Mechanical Engineering

Dr. Chen, Core Member
Mechanical Engineering

Dr. Wan, Core Member
Mechanical Engineering

Dr. Castillo, Core Member
Mechanical Engineering

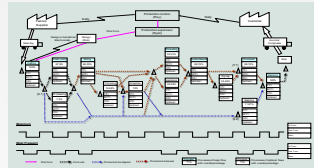
Dr. Hood, Core Member
Mechanical Engineering

Dr. Restrepo, Core Member
Mechanical Engineering

Dr. Rincon, Core Member
Mechanical Engineering



Manufacturing Systems



Lean & Six Sigma



Corrosion



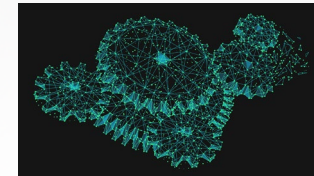
Supply Chain Optimization



Medical Device Design



Additive Manufacturing



Machine Learning